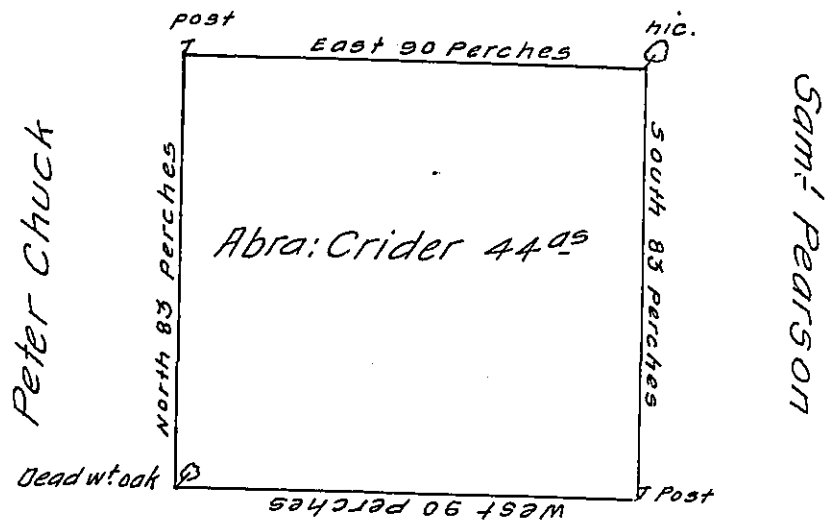


John Yoder



Henry Taylor & other land of Abra. Crider

By direction of the Hon^{ble} the Proprietaries I surveyed ^{the} above described Tract of Land to Abraham Crider being part of the Manor of Richland in the County of Bucks. containing 44 Acres And Allowance - Six & Cent.

Nich^o Scull. —

IN TESTIMONY that the above is a copy of the original remaining on file in the Department of Internal Affairs of Pennsylvania, made conformably to an Act of Assembly approved the 16th day of February, 1833, I have hereunto set my Hand and caused the Seal of said Department to be affixed at Harrisburg, this seventh day of June 1910.

Henry Houch
 Secretary of Internal Affairs.